

PCD 122

Coupling Network for Symmetrical Data and Control Lines

■ The **PCD 122** is used for coupling of 10/700 μ s impulses up to 6.6kV peak onto unshielded symmetrical data and signal lines according IEC/EN and ITU standards. Up to 2 pairs / 4 wires can be tested simultaneously.

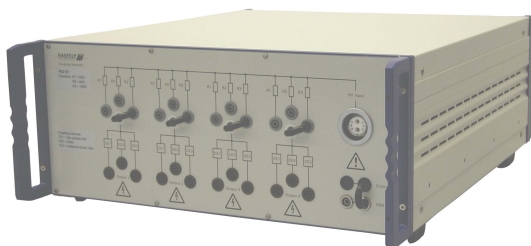
To obtain maximum flexibility only coupling elements are included in the PCD 122. Decoupling circuits, which depends on the EUT to be tested, can be placed separately in the test setup.

Manual coupling path switching for common mode (longitudinal, line to earth) and for differential mode (transverse mode, line to line) testing.

Default coupling elements are gas arrestors and breakdown avalanche diodes. The coupling elements can be selected easily. The direct coupling output allows the customer to use his own coupling elements.

The PCD 122 can be used together with the impulse module PIM 120 from the Surge Platform. This provides all the programming functions required to perform IEC, ANSI and EN testing also without the need of a control computer.

With a 100 year history of innovation, service centers on three continents and a full staff development and support engineers, Haefely is the clear choice for all your transient immunity test needs.



■ Features

- 10/700 μ s impulses
- Serial resistors included
- Up to 4 wires can be tested
- Signal Bandwidth up to >10MHz
- Low capacitive load on the EUT lines
- Manual coupling path selection

■ Benefits

International application – Specifically designed to meet and exceed the requirements of:

- IEC / EN 61000-4-5 Edition 1 Figure 12
- IEC / EN 61000-4-5 Edition 2 Figure 14
- ITU K.44: 2003 Figures A.5-1 and A.6.1-1 to A.6.1-5

Safe and Easy - All the sockets are safety banana plugs to ensure maximum safety to the user. The selected coupling path can be seen at a glimpse.

Sturdy and Reliable – Careful component selection ensures that the PCD 122 will continue to operate under the most strenuous testing regimen.

Report Generation - The unit controller can automatically generate test reports without a computer. Add WinFEAT&R control and reporting software on a host PC to collect and collate data in any format you like.

■ Applications

- Unshielded symmetrical data and signal lines
- Telecom equipment
- Other international requirements for 10/700 μ s impulses on symmetrical operated lines

■ Technical Specifications

| | | |
|----------------------|--|---|
| Impulse shape | 10/700 μ s | |
| Impulse amplitude | max. 6.6kV | |
| Serial Resistor | 4 x 25 Ohm 4 x 50 Ohm 4 x 100 Ohm | 1 wire (IEC/EN) or 4 wires / 2 pairs (ITU) 2 wires / 1 pair (IEC/EN) 4 wires / 2 pairs (IEC/EN) |
| Coupling elements | Gas arrestors 90V Avalanche breakdown diodes (ABDs) | |
| Voltage on EUT lines | max. 72V _{DC} or 50V _{AC,RMS} max. 144V _{DC} or 100V _{AC,RMS} | with gas arrestors as coupling elements with ABDs as coupling elements |
| Signal bandwidth | up to >10MHz up to >1MHz | with gas arrestors as coupling elements with ABDs as coupling elements |

Other coupling elements on request.

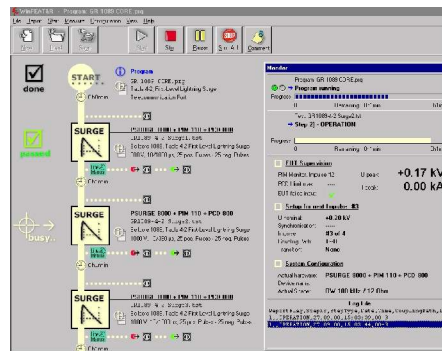
Weight and Dimensions

| | | | |
|--------|-------------------|------------|-------------------------------|
| Weight | approx. 10 kg net | Dimensions | 45 x 19.5 x 57 cm (w x h x d) |
|--------|-------------------|------------|-------------------------------|

■ PCD 122 Art. No. 249802 Scope of supply

- Qty. 1 PCD 122
- Qty. 1 HV cable Fischer - Fischer 1m
- Qty. 1 Cable set
- Qty. 5 Short circuit bridges
- Qty. 1 Users Manual

WinFEAT&R Control Window



■ Options and Accessories

- DEC 5 Decoupling unit with current compensated inductors as decoupling elements according IEC 61000-4-5 Edition 2 and ITU K.44.
- DEC 6 Decoupling unit with resistors as decoupling elements according ITU K.44.
- PSURGE 8000 Mainframe of the Surge Platform
- PIM 120 10/700 μ s impulse module up to 7.4kV
- WinFEAT&R Control and reporting software. Runs under windows 98, NT, ME, 2000, XP

Headquarters
Haefely Test AG
 Lehenmattstrasse 353
 CH-4052, Basel
 Switzerland

+ 41 61 373 41 11
 + 41 61 373 45 99
EMC-sales@haefely.com

Locate your local
 sales representative at
www.haefelyEMC.com



HAEFELY EMC
 TECHNOLOGY

North American Office
Hipotronics Inc.
Haefely EMC Division
 1650 Route 22
 Brewster, NY 10509

++1 845 279 3644 x264
 ++1 845 279 2467
EMCsales@hubbell-haefely.com