



Surge Platform architecture has several **unique features** which make the system better, easier and faster to assemble and operate. The whole system is a new design to meet the needs of a **Fully compliant 2 wire, 4 wire and 12 pair solution**.

**Modularity means Flexibility**

Subsets of equipment can be stored in racks or stand alone on lab carts moved to various locations for connections to a PSURGE 8000 controller. Three simple connections add an entire test suite to a Platform system. Suites of capability could be logical groupings of modules for various standards such as Bellcore 1089, FCC part 68, IEEE/ANSI C62.41, IEC 1000 series, ITU K series, or a single module. Single modules can be recalibrated or exchanged while testing with the other modules continues.



**User friendly**

Standard related information about connection, coupling and test condition is presented on module front panels, firmware and control software WinFEAT&R.

The coupling can be selected "direct" or using a "coupling element" (default gas arrestor, which can be easily changed by the user).

**Our aim is always to design for the user and not just to fulfil standard requirements!**

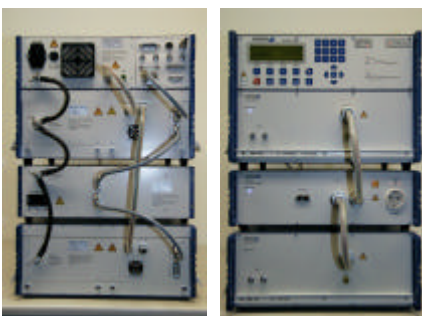
**Single Connect® Philosophy**

The Haefely Surge Platforms unique **Single Connect®** system enables simultaneous connection of all Telecom and Power line interfaces on an EUT to a surge test system. The Platform System then performs non-stop, **fully automated testing** of all interfaces with appropriate impulse wave shapes. Coupling path and wave-shape selection are also fully automatic requiring minimum user intervention.



**3 multiplexed 4 wire outputs**

No operating personal needed while testing a full set of 3 samples. Surge suppressors of the first EUT sample are cooling down while the second EUT is being tested and so on. This saves testing time, operator time, uptime (24h testing) and eliminates potential personnel hazards.



back front

**Plug and Play**

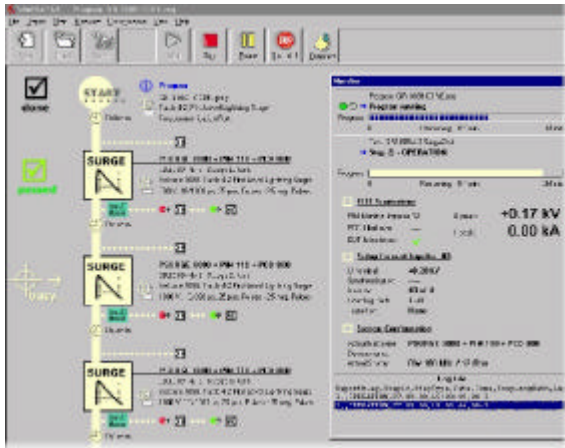
Our Telecoms Testing Application Note 01 describes specific modules for Bellcore 1089 testing which are "daisy chained" together and linked to the PSURGE 8000 Controller Unit. This daisy chaining technique eliminates the physical limitations of all previous multi-wave shape surge test systems. There are **no constraints** imposed by rigid mounting bays, racks, and back planes. The Platform also eliminates the need for "module swapping" in order to obtain various wave shapes or coupling networks. Testing with new modules is as simple as connection to the host controller through the Haefely Bus and restarting the system. Once an auto scan has been performed, new modules are available for testing.

**Accuracy and Performance**

**Fully compliant** test system with the **tightest tolerances on the market for peak values and time parameters**. The Standard asks for ">" or "<" values that gives vendors a wide range of freedom to set up the impulse circuits. But wide tolerances means overstressed (or even failed!) EUTs even while still fulfilling the standard requirements! The Haefely Surge Platform architecture uses high quality components and gives you fastest impulse intervals again saving testing and operator time.

*..and much more! Ask for a quote.*

Control Software **WinFEATR** "Fast, Easy, Accurate Testing & Reporting"

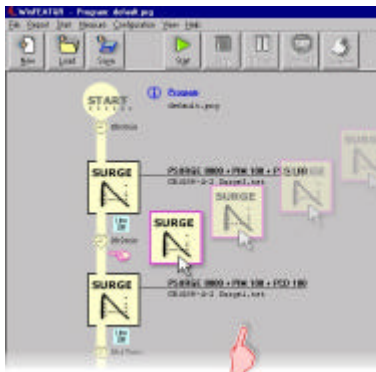


- Easy, intuitive understandable operation
- Clear, graphical presentation of tests and program processes.

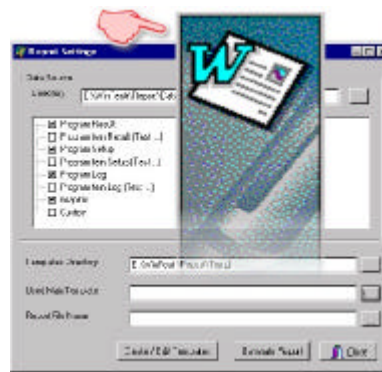


- Supervision of testing time in programming state (preview of expected testing time even without connected hardware)

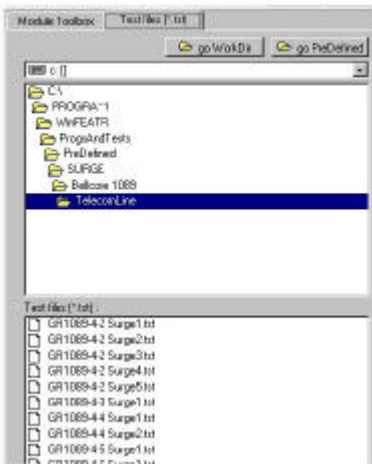
- Monitor of running tests



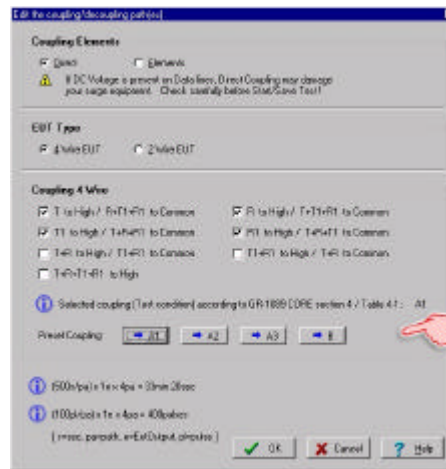
- Sequence programming based on Drag & Drop technology



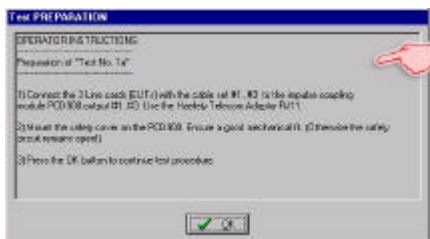
- Automated WinWord™ Report Generator with predefined templates that easily (WinWord™ .dot standard) can be changed.



- Predefined Test files for most existing Standards (Bellcore, IEC, FCC, etc.) are implemented



- Impulse and Coupling Module Settings dialogs with Standard related pre-set buttons.



- Test preparation and programming in the office. Possibility of freely definable message boxes with test rules, connection orders, etc. for operators



- Impulse and Coupling Module Settings dialog with Standard related configurations.

..and much more! Ask for a demo.

Worldwide Headquarters  
**Haefely Test AG**  
 Business Unit EMC  
 Bernstrasse 90, P.O. Box  
 CH-8953 Dietikon – Switzerland

Phone: +41.61. 373 41 11  
 Fax: +41.61. 373 45 99  
 e-mail: EMCsales@haefely.com

North American Office  
**Haefely Test Inc.**  
 1308 Devils Reach Road  
 VA 22192 Woodbridge  
 USA

Phone: +1 703 494 1900  
 Fax: +1 703 494 4597  
 e-mail: ReveszHTU@aol.com

