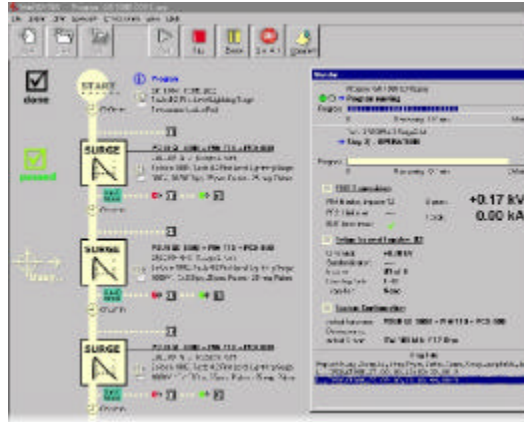


WinFEAT[®] CONTROL SOFTWARE

"Fast, Easy, Accurate Testing - Reporting"

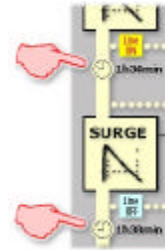
www.haefelyemc.com



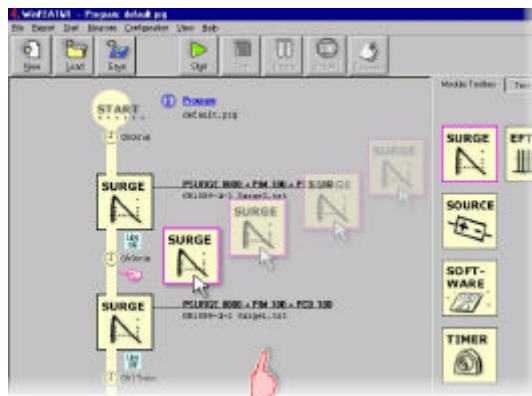
Monitor of running tests ↑

← Easy, intuitive understandable operation

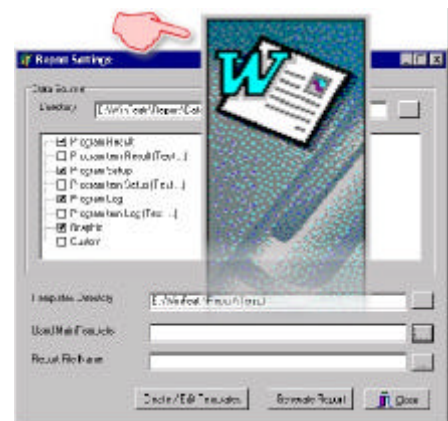
← Clear, graphical presentation of tests and program processes.



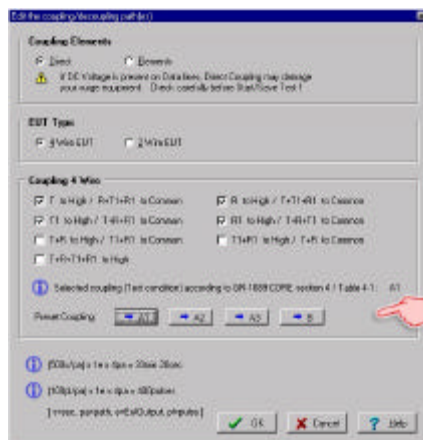
← Supervision of testing time in programming state (preview of expected testing time even without hardware connected)



↑ Sequence programming based on Drag & Drop technology



↑ Automated WinWord™ Report Generator with predefined templates that can be easily changed. (WinWord™ .dot standard)



↑ Impulse and Coupling Module Set up dialogs with pre-set buttons for specific standards



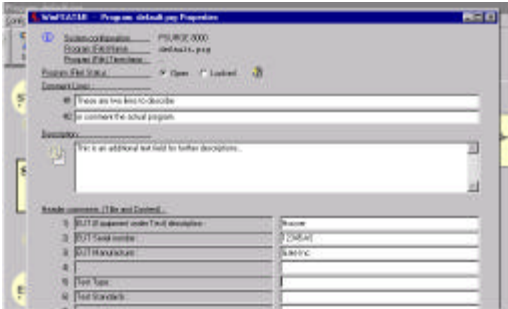
↑ Test preparation and programming in the office. Freely definable message boxes with test rules, connection orders, etc. for operators in the test laboratory.



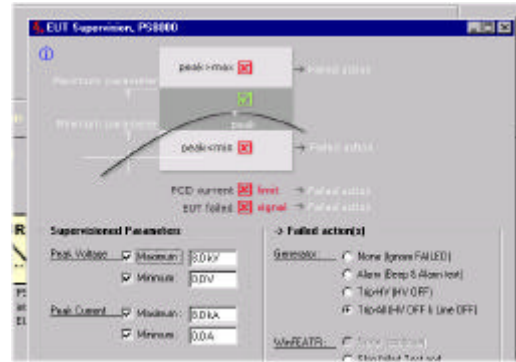
↑ Settings dialog based on Standard configurations.

Configuration settings can be checked before a test is started with the **Preview Log** function. →

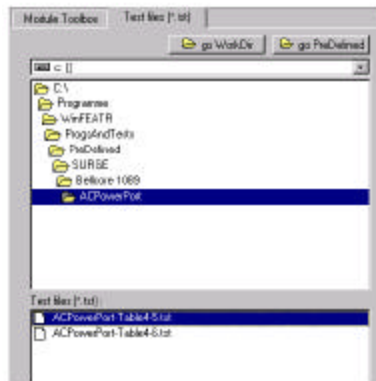
| Time | Impulse No. | Output No. | Nominal [kV] | Syncr |
|----------|-------------|------------|--------------|-------|
| 00:00:00 | 1 | 1 | + 0.25 | --- |
| 00:02:00 | 2 | 1 | + 0.25 | --- |
| 00:04:00 | 3 | 1 | + 0.25 | --- |
| 00:06:00 | 4 | 1 | + 0.25 | --- |
| 00:08:00 | 5 | 1 | + 0.25 | --- |
| 00:10:00 | 1 | 1 | + 0.25 | --- |
| 00:12:00 | 2 | 1 | + 0.25 | --- |
| 00:14:00 | 3 | 1 | + 0.25 | --- |
| 00:16:00 | 4 | 1 | + 0.25 | --- |
| 00:18:00 | 5 | 1 | + 0.25 | --- |
| 00:20:00 | 1 | 1 | + 0.25 | --- |
| 00:22:00 | 2 | 1 | + 0.25 | --- |
| 00:24:00 | 3 | 1 | + 0.25 | --- |



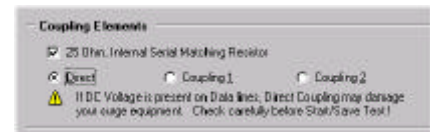
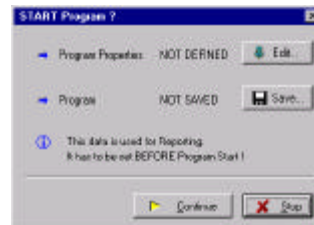
↑ Comments and descriptions can be easily linked to individual Programs or Tests for clear understanding and later recall.



↑ Integrated EUT-supervision.



← System pre-programmed **Standard Tests** for the most common requirements.



↑ Built-in interactive warnings to prevent incorrect configuration settings which could result in damage of EUT or generators.

← Reminder and hint dialogs to prevent loss of information or data.

SYSTEM REQUIREMENTS

- Microsoft Word2000 as report generator interface
- Microsoft WindowsNT4.0 or Microsoft Windows98 operating system
- 75MHz Pentium or higher processor
- Super VGA resolution or higher
- 32MB of RAM or more
- Available hard disk space 20MB
- CD-ROM drive
- GPIB interface (IEEE488) , Type "National Instruments, PC II / IIA / Plug and Play" or
- RS232 ports (one per tester)

ORDERING INFORMATION

WinFEAT&R software 249970

The control software is also available as fully installed system with industrial PC.



Haefely Test Inc.
Business Unit EMC
 1308 Devils Reach Road
 Woodbridge, VA 22192
 USA
 Phone: (703) 494 1900
 Fax: (703) 494 4597
 email: ReveszHTU@aol.com