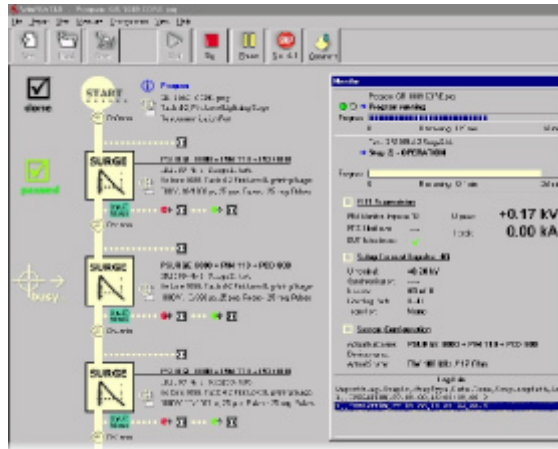


# WinFEAT<sub>EMC</sub>R<sup>®</sup> CONTROL SOFTWARE

**"Fast, Easy, Accurate Testing & Reporting"**

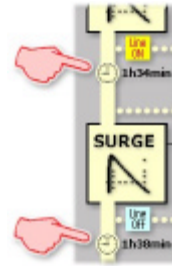
www.haefelyemc.com



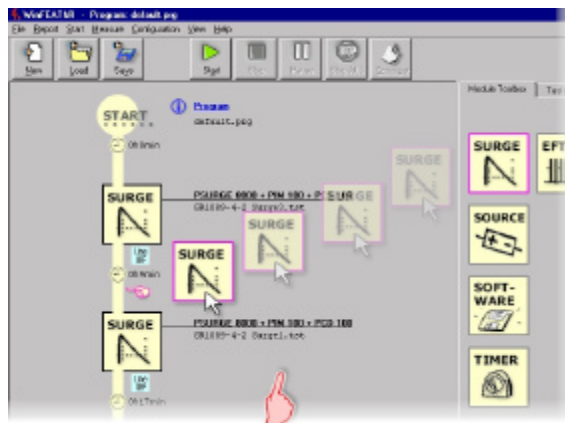
Monitor of running tests ↑

← **Easy, intuitive** understandable operation

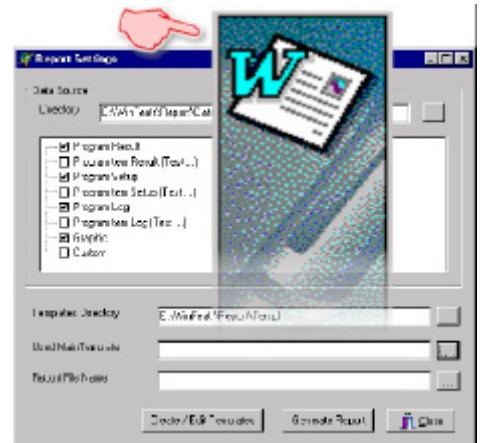
← **Clear, graphical presentation** of tests and program processes.



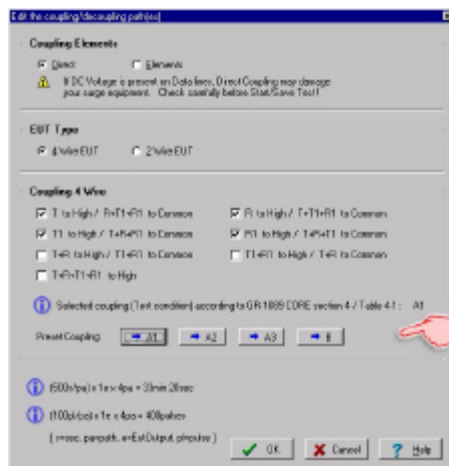
← **Supervision of testing time** in programming state (preview of expected testing time even without hardware connected)



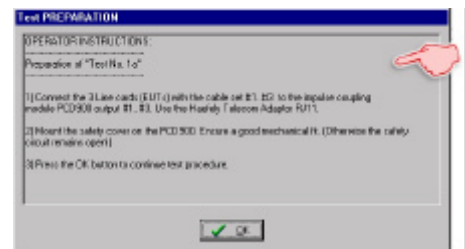
↑ Sequence programming based on **Drag & Drop** technology



↑ **Automated WinWord™ Report Generator** with predefined templates that can be easily changed. (WinWord™ .dot standard)

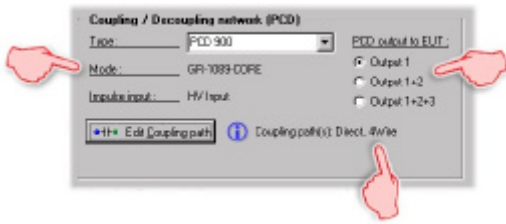


↑ Impulse and Coupling Module Set up dialogs with **pre-set buttons** for specific standards



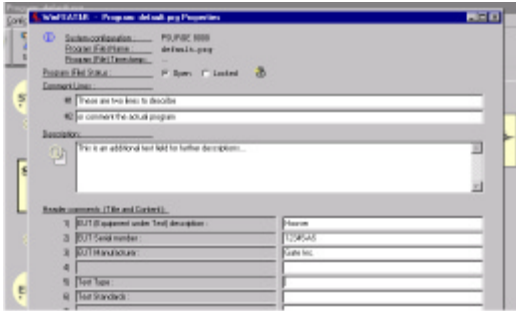
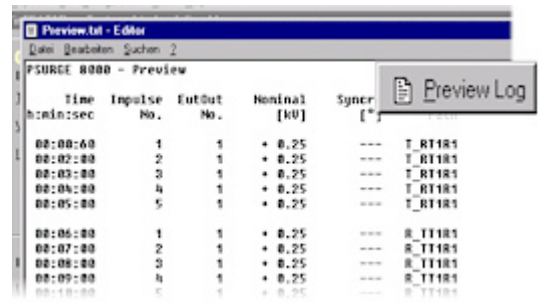
↑ **Test preparation and programming in the office.** Freely definable message boxes with test rules, connection orders, etc. for operators in the test laboratory.

EMC

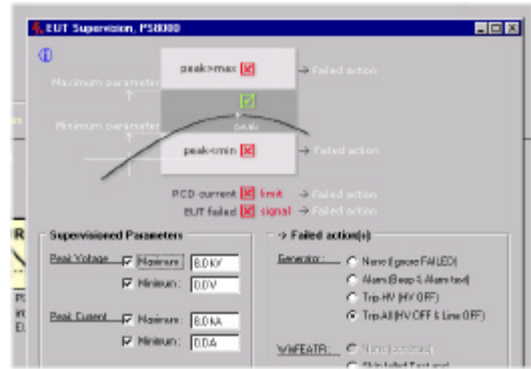


↑ Settings dialog based on **Standard configurations**.

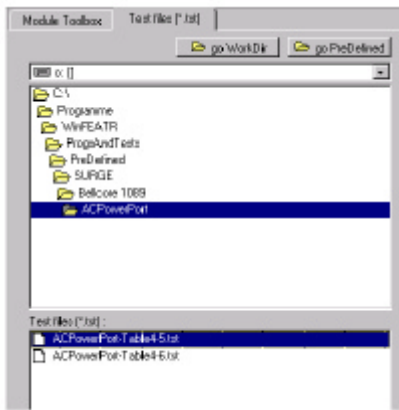
Configuration settings can be checked before a test is started with the **Preview Log** function. →



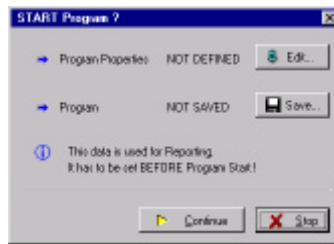
↑ **Comments and descriptions** can be easily linked to individual Programs or Tests for clear understanding and later recall.



↑ Integrated **EUT-supervision**.



← System pre-programmed **Standard Tests** for the most common requirements.



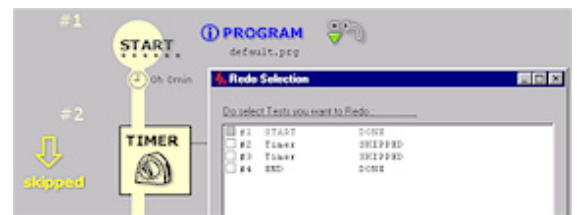
↑ Built-in **interactive warnings** to prevent incorrect configuration settings which could result in damage of EUT or generators.

← Reminder and **hint dialogs** to prevent loss of information or data.



← Built-in **"Redo"** functionality: Repeat single Tests out of a finished or running program. Safe additional re-testing time and nerves.

Just select the test(s) to be repeated out of the list and restart the program. →



## SYSTEM REQUIREMENTS

- ❑ Microsoft Word2000 as report generator interface
- ❑ OS: Windows NT4.0, 98, ME, 2000
- ❑ 75MHz Pentium or higher processor
- ❑ Super VGA resolution or higher
- ❑ 32MB of RAM or more
- ❑ Available hard disk space 50MB
- ❑ CD-ROM drive and 3.5" Floppy drive
- ❑ GPIB interface (IEEE488) , any "National Instruments" (e.g. PC II / IIA / Plug and Play) or
- ❑ RS232 ports (one per tester)

## ORDERING INFORMATION

WinFEATR software 249 970

The control software is also available as fully installed system with industrial PC.